



**Heavy Duty Baking Mixers**  
*Model MX-CN-0020, 0030, 0040, 0060, 0080*  
*Item 43560, 44388, 44389, 44390, 44391*  
**Instruction Manual**



*Revised - 03/24/2023*



---

Toll Free: 1-800-465-0234  
Fax: 905-607-0234  
Email: [service@omcan.com](mailto:service@omcan.com)  
[www.omcan.com](http://www.omcan.com)



# ***Table of Contents***

Model MX-CN-0020 / Model MX-CN-0030 / Model MX-CN-0040  
Model MX-CN-0060 / Model MX-CN-0080

---

<b>Section</b>	<b>Page</b>
General Information -----	3 - 4
Safety and Warranty -----	4 - 5
Technical Specifications -----	6
Operation -----	6 - 8
Maintenance -----	8 - 9
Troubleshooting -----	9
Parts Breakdown -----	10 - 27
Electrical Schematics -----	28 - 30
Warranty Registration -----	31



# General Information

---

Omcan Manufacturing and Distributing Company Inc., Food Machinery of America, Inc. dba Omcan and Omcan Inc. are not responsible for any harm or injury caused due to any person's improper or negligent use of this equipment. The product shall only be operated by someone over the age of 18, of sound mind, and not under the influence of any drugs or alcohol, who has been trained in the correct operation of this machine, and is wearing authorized, proper safety clothing. Any modification to the machine voids any warranty, and may cause harm to individuals using the machine or in the vicinity of the machine while in operation.

## CHECK PACKAGE UPON ARRIVAL

Upon receipt of an Omcan shipment please inspect for external damage. If no damage is evident on the external packaging, open carton to ensure all ordered items are within the box, and there is no concealed damage to the machine. If the package has suffered rough handling, bumps or damage (visible or concealed), please note it on the bill of lading before accepting the delivery and contact Omcan within 24 hours, so we may initiate a claim with the carrier. A detailed report on the extent of the damage caused to the machine must be filled out within three days, from the delivery date shown in the shipping documents. Omcan has no recourse for damaged products that were shipped collect or third party.

**Before operating any equipment, always read and familiarize yourself with all operation and safety instructions.**

Omcan would like to thank you for purchasing this machine. It's of the utmost importance to save these instructions for future reference. Also save the original box and packaging for shipping the equipment if servicing or returning of the machine is required.

---

Omcan Fabrication et distribution Compagnie Limitée et Food Machinery d'Amérique, dba Omcan et Omcan Inc. ne sont pas responsables de tout dommage ou blessure causé du fait que toute personne ait utilisé cet équipement de façon irrégulière. Le produit ne doit être exploité que par quelqu'un de plus de 18 ans, sain d'esprit, et pas sous l'influence d'une drogue ou d'alcool, qui a été formé pour utiliser cette machine correctement, et est vêtu de vêtements de sécurité appropriés. Toute modification de la machine annule toute garantie, et peut causer un préjudice à des personnes utilisant la machine ou des personnes à proximité de la machine pendant son fonctionnement.

## VÉRIFIEZ LE COLIS DÈS RÉCEPTION

Dès réception d'une expédition d'Omcan veuillez inspecter pour dommages externes. Si aucun dommage n'est visible sur l'emballage externe, ouvrez le carton afin de s'assurer que tous les éléments commandés sont dans la boîte, et il n'y a aucun dommage dissimulé à la machine. Si le colis n'a subi aucune mauvaises manipulations, de bosses ou de dommages (visible ou cachée), notez-le sur le bond de livraison avant d'accepter la livraison et contactez Omcan dans les 24 heures qui suivent, pour que nous puissions engager une réclamation auprès du transporteur. Un rapport détaillé sur l'étendue des dommages causés à la machine doit être rempli dans un délai de trois jours, à compter de la date de livraison indiquée dans les documents d'expédition. Omcan n'a aucun droit de recours pour les produits endommagés qui ont été expédiés ou cueilli par un tiers transporteur.

# General Information

---

Avant d'utiliser n'importe quel équipement, toujours lire et vous familiariser avec toutes les opérations et les consignes de sécurité.

Omcan voudrais vous remercier d'avoir choisi cette machine. Il est primordial de conserver ces instructions pour une référence ultérieure. Également conservez la boîte originale et l'emballage pour l'expédition de l'équipement si l'entretien ou le retour de la machine est nécessaire.

Omcan Empresa De Fabricacion Y Distribucion Inc. Y Maquinaria De Alimentos De America, Inc. dba Omcan y Omcan Inc. no son responsables de ningun daño o perjuicio causado por cualquier persona inadecuada o el uso descuidado de este equipo. El producto solo podra ser operado por una persona mayor de 18 años, en su sano juicio y no bajo alguna influencia de droga o alcohol, y que este ha sido entrenado en el correcto funcionamiento de esta máquina, y ésta usando ropa apropiada y autorizada. Cualquier modificación a la máquina anula la garantía y puede causar daños a las personas usando la máquina mientras esta en el funcionamiento.

## REVISE EL PAQUETE A SU LLEGADA

Tras la recepcion de un envio Omcan favor inspeccionar daños externos. Si no hay daños evidentes en el empaque exterior, Habra el carton para asegurarse que todos los articulos solicitados estén dentro de la caja y no encuentre daños ocultos en la máquina. Si el paquete ha sufrido un manejo de poco cuidado, golpes o daños (visible o oculto) por favor anote en la factura antes de aceptar la entrega y contacte Omcan dentro de las 24 horas, de modo que podamos iniciar una reclamación con la compañía. Un informe detallado sobre los daños causados a la máquina debe ser llenado en el plazo de tres días, desde la fecha de entrega que se muestra en los documentos de envío. Omcan no tiene ningun recurso por productos dañados que se enviaron a recoger por terceros.

Antes de utilizar cualquier equipo, siempre lea y familiarizarse con todas las instrucciones de funcionamiento y seguridad.

Omcan le gustaría darle las gracias por la compra de esta máquina. Es de la mayor importancia para salvar estas instrucciones para futuras consultas. Además, guarda la caja original y el embalaje para el envío del equipo si servicio técnico o devolución de la máquina que se requiere.

# Safety and Warranty

---

## PRECAUTIONS

- If any item is missing or damaged, please contact the dealer and keep all the packing materials.
- Keep the space on top of the mixer >30cm. Keep the distance between each side/back and the wall >10cm.
- Do not place the machine in a damp place close to heat sources or with direct sunlight.
- Floor or counter must be stable and level.



# Safety and Warranty

---

- Connect or plug the machine power cord to an electrical outlet. Do not share the power socket with other machines.
- Do not use the machine continuously, or its service life may be reduced.
- Do not place the machine in an operating environment where room temperature is a too low (<math><5^{\circ}\text{C}</math>) or too high (>math>>40^{\circ}\text{C}</math>).

**Warning: Do not knead dough at a high speed, do not use sticky ingredients.**

## CAUTION

- Disconnect or unplug electrical power before cleaning, repairing or moving the machine.
- Keep hands away from moving parts especially the bowl and the safety guard when the mixer is in operation.
- Disconnect or unplug electrical power before changing agitator to avoid personal injury.
- Owners should not permit kids to touch this equipment. Owners should also ensure that no other unauthorized personnel come in contact with this equipment. Unless the operator is adequately trained and supervised there is a possibility of serious injury.
- Do not rinse the entire mixer. Do not use a steel wool or abrasive material to clean the mixer.

**RESIDENTIAL USERS: Vendor assumes no liability for parts or labor coverage for component failure or other damages resulting from installation in non-commercial or residential applications. The right is reserved to deny shipment for residential usage; if this occurs, you will be notified as soon as possible.**

## 1 YEAR PARTS AND LABOUR WARRANTY

**Within the warranty period, contact Omcan Inc. at 1-800-465-0234 to schedule an Omcan authorized service technician to repair the equipment locally.**

**Unauthorized maintenance will void the warranty. Warranty covers electrical and part failures not improper use.**

**Please see <https://omcan.com/disclaimer> for complete info.**

## WARNING:

The packaging components are classified as normal solid urban waste and can therefore be disposed of without difficulty.

**In any case, for suitable recycling, we suggest disposing of the products separately (differentiated waste) according to the current norms.**

**DO NOT DISCARD ANY PACKAGING MATERIALS IN THE ENVIRONMENT!**

# Technical Specifications

Model	MX-CN-0020	MX-CN-0030	MX-CN-0040	MX-CN-0060	MX-CN-0080
<b>Bowl Capacity</b>	20 L / 21.1 QT	30 L / 31.7 QT	40 L / 42.3 QT	60 L / 63.4 QT	80 L / 84.5 QT
<b>Flour Capacity</b>	17.6 lbs. / 8 kgs.	22 lbs. / 10 kgs.	28.7 lbs. / 13 kgs.	33.1 lbs. / 15 kgs.	44.1 lbs. / 20 kgs.
<b>Dough Capacity</b>	28.2 lbs. / 12.8 kgs.	35.3 lbs. / 16 kgs.	45.9 lbs. / 20.8 kgs.	52.9 lbs. / 24 kgs.	70.5 lbs. / 32 kgs.
<b>Water Ratio</b>	60%				
<b>Power</b>	1.5 kW	2 kW	2.2 kW	3 kW	4 kW
<b>Shaft Speed (RPM)</b>	1st - 120 2nd - 272 3rd - 390	1st - 112 2nd - 206 3rd - 351	1st - 120 2nd - 268 3rd - 372	1st - 119 2nd - 275 3rd - 396	
<b>Electrical</b>	110-120V / 60Hz / 1Ph			220V / 60Hz / 3Ph	
<b>Dimensions</b>	24" x 23.6" x 36.1" 610 x 600 x 918mm	27.1" x 25.2" x 45.1" 688 x 641 x 1145mm	29.3" x 25.2" x 48.2" 744 x 640 x 1225mm	38.4" x 34.7" x 60" 976 x 882 x 1525mm	
<b>Weight</b>	260.1 lbs. 118 kgs.	385.8 lbs. 175 kgs.	496 lbs. 225 kgs.	1040.6 lbs. 472 kgs.	1080.3 lbs. 490 kgs.
<b>Item Number</b>	43560	44388	44389	44390	44391

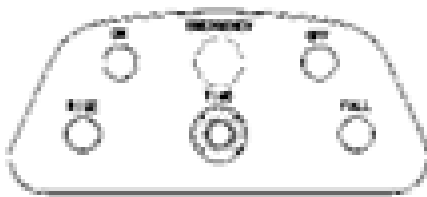
## Operation

### MACHINE STARTUP



#### FOR MX-CN-0020, 0030, 0040

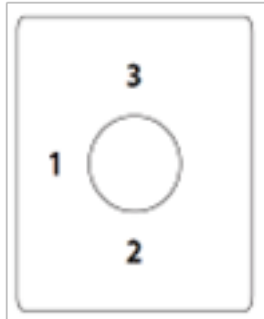
Press the (ON button) to start mixing.  
 Press the (OFF button) to stop mixing.  
 Rotate the (Timer) for timing.  
 In case of emergency, press the (OFF button) to stop mixing immediately.  
 Replace the beater after shutdown.



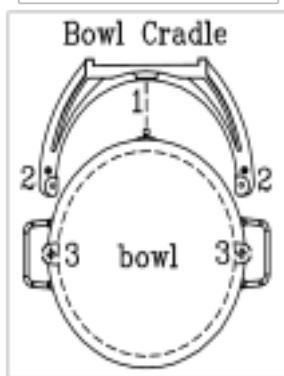
#### FOR MX-CN-0060, 0080

Press the (ON button) to start mixing.  
 Press the (OFF button) to stop mixing.  
 Rotate the (Timer) for timing.  
 In case of emergency, press the (EMERGENCY button) to stop mixing immediately. Replace the beater after shutdown.  
 Press RISE button (or bowl lift button) before you start the machine. Press FALL button (or bowl lower down button) before you stop the machine.

# Operation



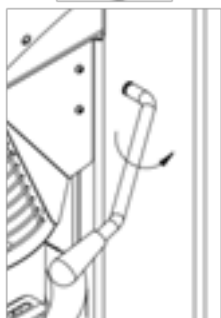
Use the Speed Control handle to adjust speed.



Lift the bowl and slowly position the locking pin into the hole 1 in the cradle, lower the bowl (hole 3 on the bowl) onto the pins located on either of the bowl cradle (hole 2 in the cradle), secure the bowl by pulling each bowl clamp.



To attach the agitator (i.e., beater, hook, whip) to the mixer, slide the agitator slowly upwards onto the mixer shaft fitting the shaft pin through the slot in the agitator, rotate the agitator 45 degree clockwise to secure it onto the mixer shaft, rotate the agitator 45 degree counterclockwise to remove the agitator.



**ONLY FOR MX-CN-0020, 0030, 0040**

Before starting the mixer, rotate the bowl lift lever up 190 degree counterclockwise. After stopping the mixer, rotate the bowl lift lever down 190 degree clockwise.

## INSTRUCTIONS FOR THE AGITATOR

- Flat Beater: for mashing potatoes, mixing cake batter and frostings.
- Wire whip: For fluffy whipped cream, egg whites and frostings.
- Hook: For mixing bread dough and pizza dough.

# Operation

---

## APPLICABLE SPEEDS OF THE AGITATOR

	1 <sup>st</sup> SPEED	2 <sup>nd</sup> SPEED	3 <sup>rd</sup> SPEED
WIRE WHIP	✓	✓	✓
FLAT BEATER	✓	✓	
HOOK	✓	✓	

## USAGE OF ATTACHMENTS

Product	Attachment	20	30	40	60	80
Raise Donut Dough (65%AR)	Hook - 1st + 2nd	8.8 lbs. / 4 kgs.	15 lbs. / 6.8 kgs.	24.3 lbs. / 11 kgs.	59.5 lbs. / 27 kgs.	79.4 lbs. / 36 kgs.
Waffle or Hotcake Batter	Paddle	8.8 L / 9.3 QT	13 L / 13.7 QT	17.5 L / 18.5 QT	26 L / 27.5 QT	33 L / 34.9 QT
Whipped Cream	Whip	4 L / 4.2 QT	6.5 L / 6.9 QT	9.5 L / 10 QT	13 L / 13.7 QT	17.5 L / 18.5 QT
Mashed Potatoes	Paddle	15 lbs. / 6.8 kgs.	22 lbs. / 10 kgs.	29.8 lbs. / 13.5 kgs.	39.7 lbs. / 18 kgs.	49.6 lbs. / 22.5 kgs.
Egg Whites	Whip	1.1 L / 1.2 QT	1.6 L / 1.7 QT	1.9 L / 2 QT	2.2 L / 2.3 QT	2.2 L / 2.3 QT
Meringue	Whip	0.8 L / 0.8 QT	1.1 L / 1.2 QT	1.3 L / 1.4 QT	1.9 L / 2 QT	2.5 L / 2.6 QT
Heavy Bread Dough (55%AR)	Hook - 1st	15 lbs. / 6.8 kgs.	29.8 lbs. / 13.5 kgs.	39.7 lbs. / 18 kgs.	68.3 lbs. / 31 kgs.	79.4 lbs. / 36 kgs.

\* AR = Absorption Ratio

The above data is for reference only, variances may occur in dough consistency.

**NOTE: ALL OF THE AFOREMENTIONED MIXERS ALSO INCLUDE A #12 HUB FOR ADDITIONAL OPTIONAL ATTACHMENTS.**

# Maintenance

---

## CLEANING INSTRUCTIONS

- Clean the mixer prior to using it. Bowl and agitator must be thoroughly cleaned.
- Disconnect or unplug electrical power before cleaning.
- It is important to clean the mixer on a regular basis. Use soft cloth or damp sponge. Do not use a steel wool or abrasive material to clean the mixer. Do not use bleach (sodium hypochlorite) or bleached based cleaner.
- When cleaning the ON/OFF button, power cord or other electrical parts, wipe with dry cloth, do not rinse.
- The factory has applied a generous amount of grease in and on the machine before delivery; generally it can be used for half a year. If you want to add or reapply grease, please open the top cover and inject grease into the grease hole directly.



# Maintenance

## TRANSPORT AND STORAGE

- Our food mixers are all fixed with bolts in packing cases. During transport, do not place the mixers upside down or horizontal, no squeezing, bumping, rainwater or vibration. During mixer loading and unloading, the angle of inclination cannot exceed 45°.
- The machine should be stored in a ventilated dry warehouse. And must be separated from toxic or corrosive materials.
- When storing and stacking the mixers, read the storage and transport symbols on the packing cases carefully and follow these symbols for stacking.

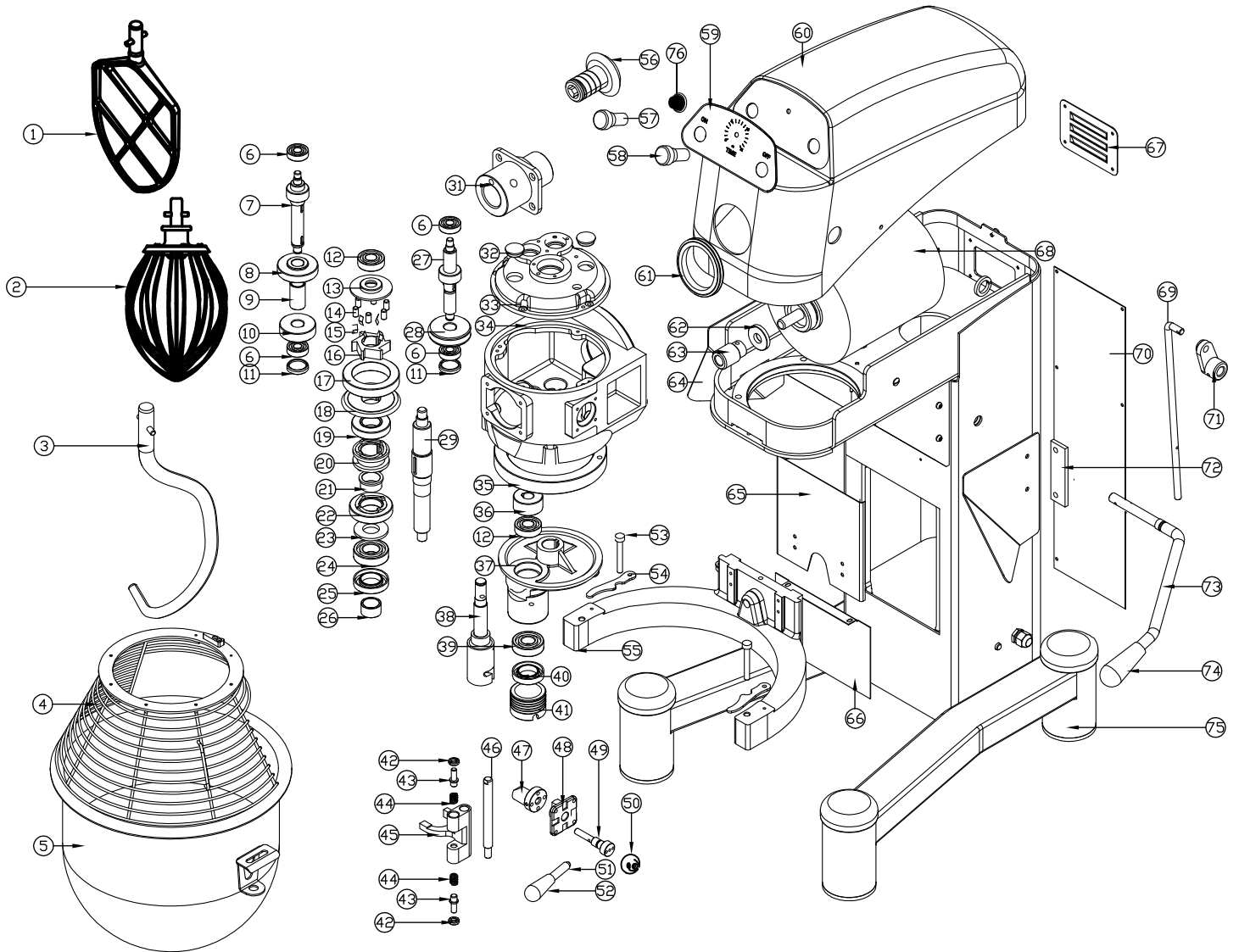
## Troubleshooting

PROBLEM	POSSIBLE CAUSES	ACTION REQUIRED
Mixer will not run.	Power is not connected properly.	Check power connections. Test the power socket with another item.
Oil leak.	The sealing ring is damaged.	Replace the sealing ring.
Motor temperature is abnormally high, and rotation speed decreases.	Incorrect or low voltage.	Electrician to check voltage.
	Unit is over loaded.	Reduce the batch size.
	Incorrect mixing speed or incorrect agitator installed.	Follow the instructions to switch the agitator or use the correct speed setting.
Mixer is noisy and runs too hot.	Mixer gear needs more grease.	Reapply grease.
Agitators touching bottom or sides of bowl.	Defective or dented bowl/agitator.	Replace the bowl/agitator.

**Note: Omcan reserves the right to modify the product at any time without prior notice. The product pictures are for reference only. Actual product may vary due to product enhancement.**

# Parts Breakdown

Model MX-CN-0020 43560





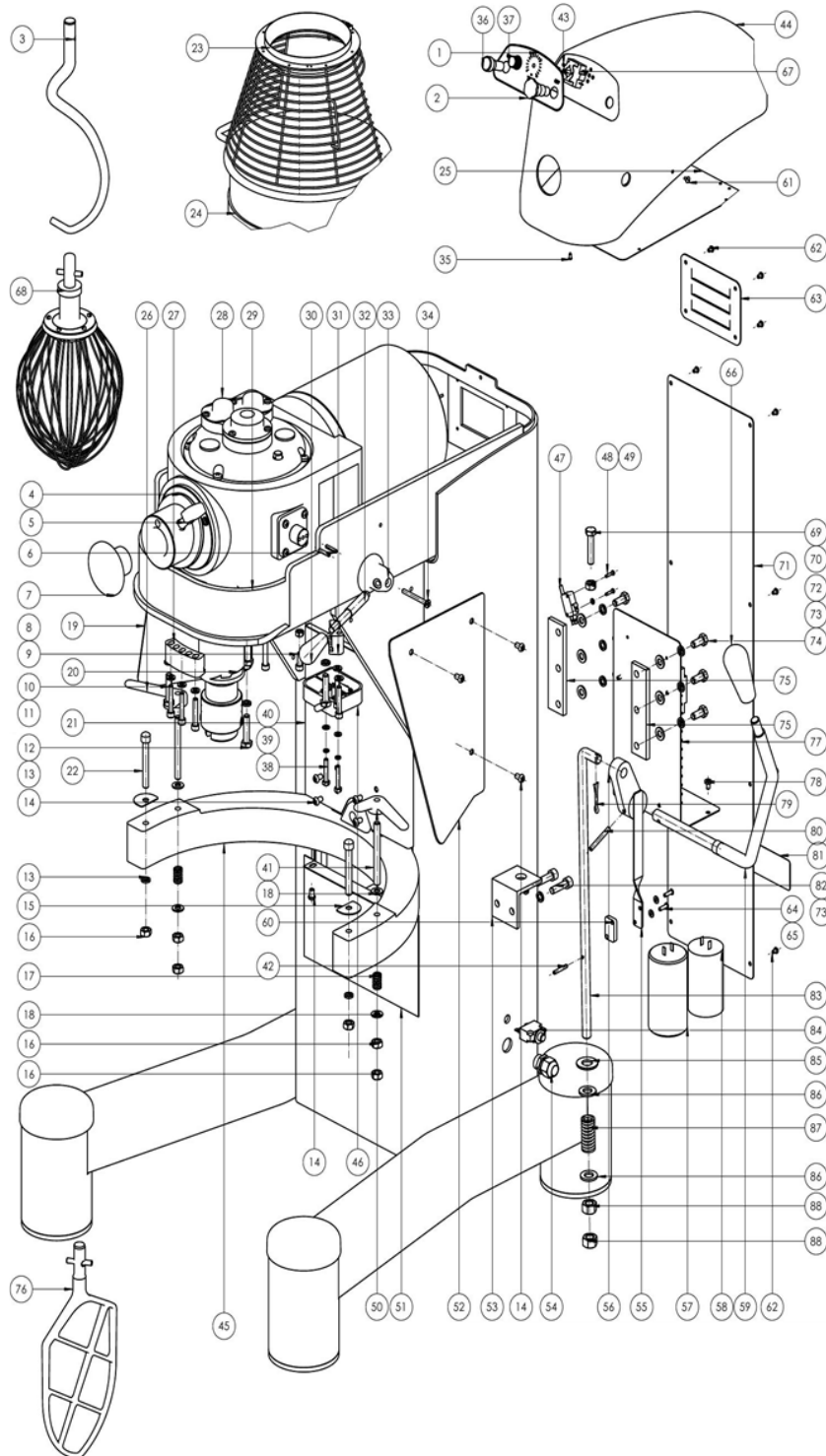
# Parts Breakdown

## Model MX-CN-0020 43560

Item No.	Description	Position	Item No.	Description	Position	Item No.	Description	Position
64973	Flat Beater for 43560	1	24929	Shaft Worm Gear for 43560	27	64982	Clamp Screw for 43560	53
64974	Wire Whipper for 43560	2	24930	Gear for 43560	28	24908	Press Board for 43560	54
43523	Hook Stainless Steel 304 for 43560	3	64976	Main Shaft for 43560	29	25781	Support for 43560	55
25726	Safety Guard for 43560	4	64977	Thumb Screw for 43560	30	24872	Tapered Gear Wheel for 43560	56
25157	Bowl Stainless Steel 304 for 43560	5	24869	Attachment Hub for 43560	31	25773	Red Button for 43560	57
24912	Bearing 6201 for 43560	6	24985	Plug Cover for 43560	32	24922	Green Button Round for 43560	58
24913	Mid-Gear Wheel for 43560	7	24895	Transmission Shaft Support for 43560	33	64983	Front Plate for 43560	59
24916	Gear for 43560	8	64978	Gearbox for 43560	34	64984	Top Cover for 43560	60
24917	Bushing for 43560	9	24886	Internal Gear for 43560	35	64985	Hub Ring for 43560	61
24918	Gear for 43560	10	24887	Gear for 43560	36	24921	Oil Seal for 43560	62
24919	Plug Cover for 43560	11	64810	Shaft Holder for 43560	37	25013	Worm Wheel-New for 43560	63
25006	Bearing for 43560	12	64811	Planetary Shaft for 43560	38	25771	Side Plate for 43560	64
24897	Spacer-Lower for 43560	13	25070	Bearing 6204 for 43560	39	25770	Cover Board for 43560	65
24879	Roller 8x15 for 43560	14	24890	Oil Seal for 43560	40	25785	Cover Board for 43560	66
64975	Spring for 43560	15	64979	Agitator Joint Shaft for 43560	41	25775	Leak Board for 43560	67
24878	Gear for 43560	16	24957	Screw for 43560	42	64986	Motor for 43560	68
24877	Big Gear for 43560	17	24959	Pin Shaft for 43560	43	25799	Connecting Rod for 43560	69
25814	Taper Gear Wheel for 43560	18	24958	Spring for 43560	44	25779	Back Cover Plate for 43560	70
24900	Gear for 43560	19	64980	Fork for 43560	45	64987	Crank Lever for 43560	71
24902	Sleeve for 43560	20	24881	Declutch Shift Shaft for 43560	46	64988	Guide Plate for 43560	72
24901	Bushing for 43560	21	64981	Shaft Bias for 43560	47	64989	Bowl Lift Arm for 43560	73
24903	Claw Type Gear Wheel for 43560	22	24864	Plate-Shifter Index for 43560	48	64990	Rubber Grip for 43560	74
24904	Gasket for 43560	23	25790	Handle-Shifter for 43560	49	64991	Mixer Base for 43560	75
24905	Bearing 6205 for 43560	24	25793	Link Rod for 43560	50	65253	Timer for 43560	76
24907	Oil Seal for 43560	25	25797	Speed Handle for 43560	51			
24906	Bushing for 43560	26	25796	Handle Sleeve M8x58 for 43560	52			

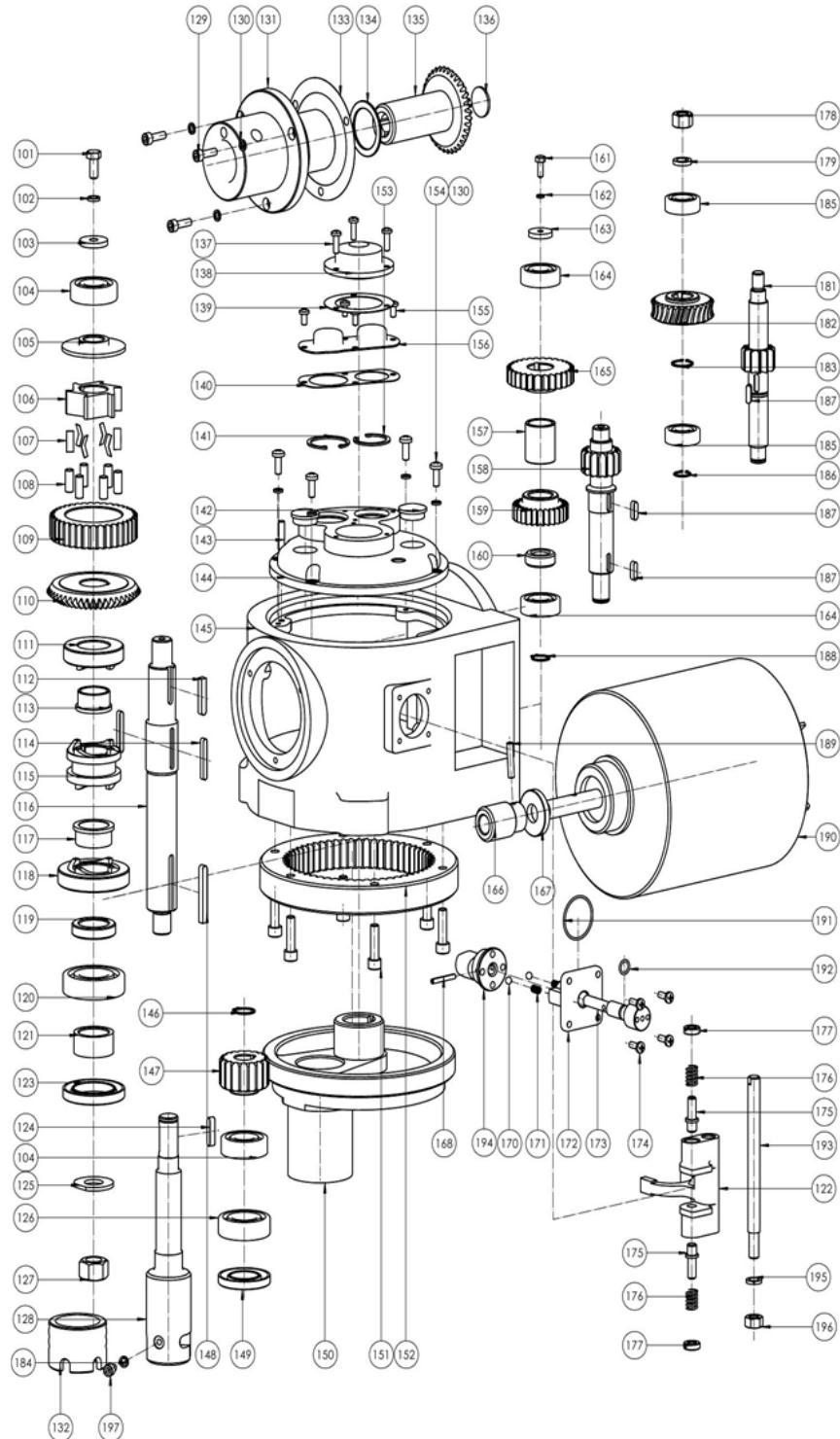
# Parts Breakdown

Model MX-CN-0030 44388



# Parts Breakdown

Model MX-CN-0030 44388



# Parts Breakdown

## Model MX-CN-0030 44388

Item No.	Description	Position	Item No.	Description	Position	Item No.	Description	Position
67774	Sticker for 44388	1	67808	Top Cover for 44388	44	25046	Spring for 44388	87
67775	Emergency Stop Button for 44388	2	67809	Support for 44388	45	25029	Nut for 44388	88
67776	Hook for 44388	3	67875	Stroke Device for 44388	46	67828	Bolt M8x20 for 44388	101
64985	Hub Ring for 44388	4	24947	Safety Guard-Bowl Switch for 44388	47	25096	Spring Washer for 44388	102
64977	Thumb Screw for 44388	5	61185	Screw M3x14 for 44388	48	67836	Shaft Retaining Ring for 44388	103
67777	Elastic Cylindrical Pin 4x20 for 44388	6	67810	Flat Washer $\Phi$ 3 for 44388	49	25070	Bearing 6204 for 44388	104
67778	Plug for 44388	7	67795	Press Board 1 for 44388	50	24987	Spacer-Lower for 44388	105
67779	Screw Nut M6 for 44388	8	67812	Cover Plate-Down for 44388	51	24989	Gear for 44388	106
67780	Bolt M6x16 for 44388	9	67788	Side Guard Left/Right for 44388	52	67837	Coil Spring for 44388	107
67781	Bolt M6x35 for 44388	10	67814	Davit for 44388	53	24990	Roller for 44388	108
65370	Stainless Steel Flat Pad $\Phi$ 6 for 44388	11	67815	Water Joint for 44388	54	24988	Big Gear for 44388	109
67782	Bolt M8x35 for 44388	12	67816	Travel Cover for 44388	55	67838	Gear for 44388	110
67783	Stainless Steel Flat Washer $\Phi$ 8 for 44388	13	67817	Crank Lever for 44388	56	25010	Gear for 44388	111
67784	Bolt M6x10 for 44388	14	67818	Running Capacitor for 44388	57	67839	Key C6x32 for 44388	112
67785	Bracket Plate for 44388	15	67819	Start Capacitor for 44388	58	24901	Bushing for 44388	113
67786	Stainless Steel Screw Nut M8 for 44388	16	67820	Handle-Shifter for 44388	59	67840	Key 5x36 for 44388	114
67787	Spring for 44388	17	67821	Plastic Block for 44388	60	24994	Sleeve for 44388	115
65366	Stainless Steel Flat Pad 8 for 44388	18	67822	Bolt M5x10 for 44388	61	67841	Main Shaft for 44388	116
67788	Side Guard Left/Right for 44388	19	67823	Bolt M4x6 for 44388	62	25011	Bushing for 44388	117
67789	Swerve Sticker for 44388	20	25775	Leak Board for 44388	63	24995	Gear for 44388	118
67790	Cover Plate Assembly for 44388	21	67824	Bolt M4x14 for 44388	64	24996	Gasket for 44388	119
67791	Bowl Locating Pin for 44388	22	65378	Flat Pad 4 for 44388	65	24997	Bearing for 44388	120
67792	Safety Grid for 44388	23	64990	Rubber Grip for 44388	66	24998	Bushing for 44388	121
67793	Bowl for 44388	24	25778	Timer for 44388	67	67842	Shifting Yoke for 44388	122
67794	Electrical Baffle for 44388	25	67825	Wire Whip for 44388	68	24999	Oil Seal for 44388	123
67795	Press Board 1 for 44388	26	67826	Bolt M8x40 for 44388	69	67843	Key 6x25 for 44388	124
67796	Safety Grid Positioning Block for 44388	27	25068	Nut for 44388	70	67844	Washer for 44388	125
67797	Body Assembly for 44388	29	67827	Back Cover for 44388	71	24905	Bearing 6205 for 44388	126
25796	Handle Sleeve M8x58 for 44388	30	65374	Flat Pad 8 for 44388	72	25004	Nut for 44388	127
67798	Safety Grid Positioning Block for 44388	31	25096	Spring Washer for 44388	73	67845	Working Shaft for 44388	128
67799	Speed Handle for 44388	32	67828	Bolt M8x20 for 44388	74	67846	Bolt M6x20 for 44388	129
67800	Connecting Rod for 44388	33	67829	Guide Rail Plate for 44388	75	39316	Locking Washer for Screws for Back Housing for 44388	130
67801	Bolt M5x50 for 44388	34	67830	Beater for 44388	76	67847	Attachment Hub for 44388	131
67802	Bolt ST4.8x12 for 44388	35	67831	Bolt M5x8 for 44388	78	67848	Fixed Sleeve for 44388	132
24922	Green Button Round for 44388	36	67832	Cotter 3x30 for 44388	79	67849	Paper Washer for 44388	133
67803	Timer Knob for 44388	37	31569	Pin for 44388	80	24871	Ring for 44388	134
67804	Bolt M5x30 for 44388	38	67833	Parameters Brand for 44388	81	67850	Gear for 44388	135
67805	Stainless Steel Flat Washer $\Phi$ 5 for 44388	39	65322	Socket Head Cap Screw M8x20 for 44388	82	25810	Cylindrical Gears Stuff Board for 44388	136
65357	Stainless Steel Flat Pad 5 for 44388	40	67834	Connecting Rod for 44388	83	67851	Bolt M5x16 for 44388	137
67806	Bolt for 44388	41	67835	Overload Switch for 44388	84	67852	Convex Head Cap for 44388	138
25720	Retainer-Spring 4x25 for 44388	42	24938	Spacer for 44388	85	67853	Pad for 44388	139
67807	Bolt M3x6 for 44388	43	25047	Spacer for 44388	86	67854	Pad for 44388	140



# Parts Breakdown

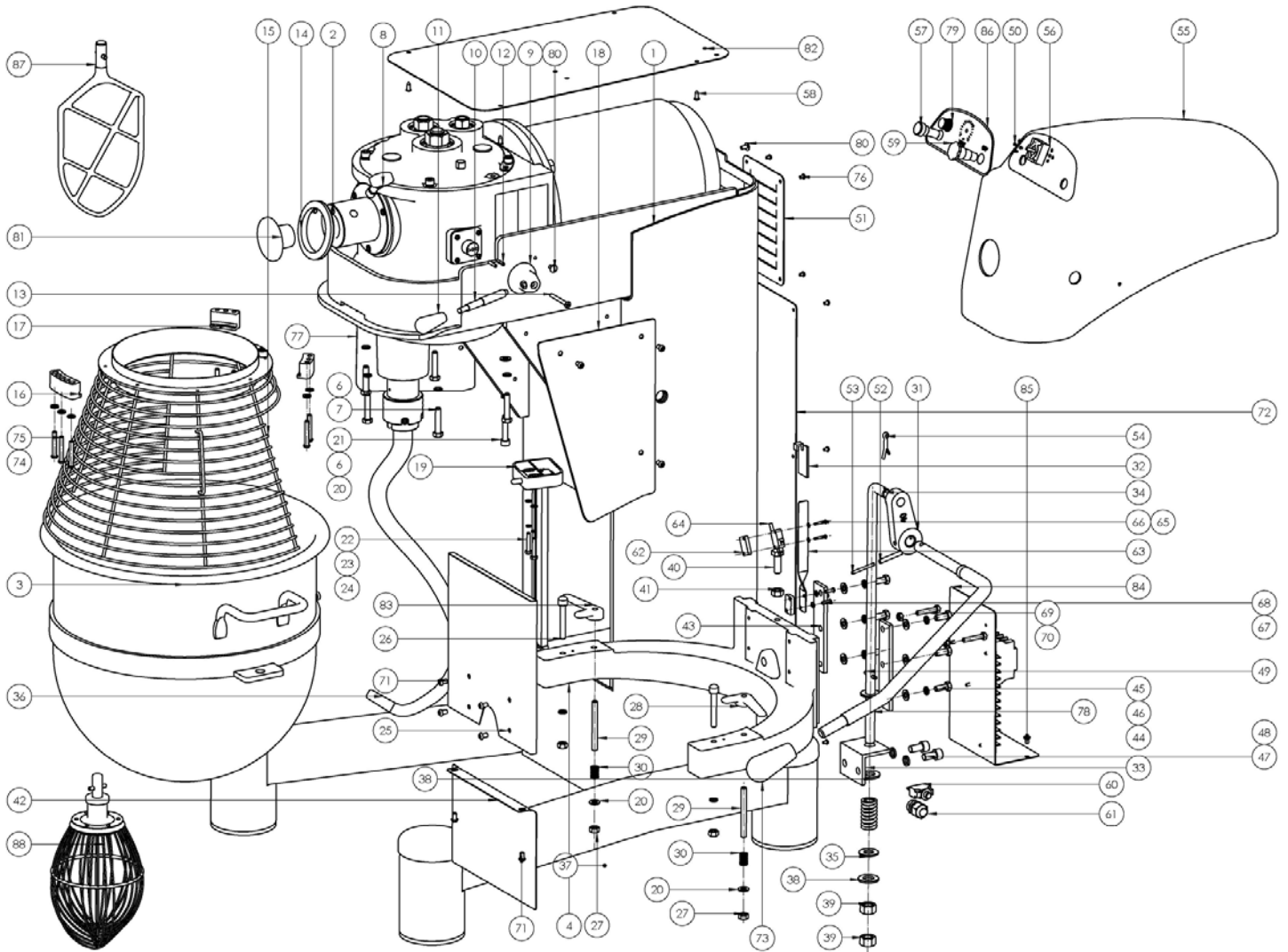
## Model MX-CN-0030 44388

Item No.	Description	Position	Item No.	Description	Position	Item No.	Description	Position
67855	Circlips 18 for 44388	141	25027	Gasket for 44388	160	25032	Shaft Worm Gear for 44388	181
24985	Plug Cover for 44388	142	67864	Bolt M5x14 for 44388	161	25024	Brass Gear-New Style 28 Teeth for 44388	182
67856	Pin 6x20 for 44388	143	67865	Spring Washer 5 for 44388	162	25034	Circlips for Shaft for 44388	183
25007	Transmission Shaft Support for 44388	144	67866	Circlips for 44388	163	65371	Stainless Steel Spring Washer 6 for 44388	184
67857	Gearbox for 44388	145	25006	Bearing for 44388	164	25084	Bearing for 44388	185
24973	Circlips for Shaft for 44388	146	25022	Gear for 44388	165	25035	Circlips for Shaft for 44388	186
24974	Planetary Gear for 44388	147	25013	Worm Wheel for 44388	166	25008	Key for 44388	187
67858	Key C6x50 for 44388	148	24921	Oil Seal for 44388	167	25009	Circlips for Shaft for 44388	188
24977	Oil Seal for 44388	149	25719	Retainer-Spring 4x30 for 44388	168	25765	Shifter Yoke for 44388	189
67859	Shaft Holder for 44388	150	25794	Steel Ball for 44388	170	67870	Motor for 44388	190
67860	Hexagon Screw M8x30 for 44388	151	25718	Spring for 44388	171	67871	O-Ring Seal 33.5x1.8G for 44388	191
25018	Internal Gear for 44388	152	67867	Handle Seat for 44388	172	67872	O-Ring Seal 9x1.8G for 44388	192
67861	Circlips 35 for 44388	153	67868	Handle Shaft for 44388	173	24980	Declutch Shift Shaft for 44388	193
65394	Phillips Screw M6x20 for 44388	154	67869	Phillips Screw M5x12 for 44388	174	67873	Fork for 44388	194
67862	Phillips Screw M5x10 for 44388	155	24959	Pin Shaft for 44388	175	24882	Ring for 44388	195
67863	Cover for 44388	156	24958	Spring for 44388	176	24883	Nut for 44388	196
25023	Bushing for 44388	157	24957	Screw for 44388	177	67874	Hexagon Screws M6x8 for 44388	197
25021	Gear Shaft for 44388	158	25029	Nut M12 for 44388	178			
25026	Gear for 44388	159	25030	Spring Washers for 44388	179			

# Parts Breakdown

Model MX-CN-0040 44389

General Assembly

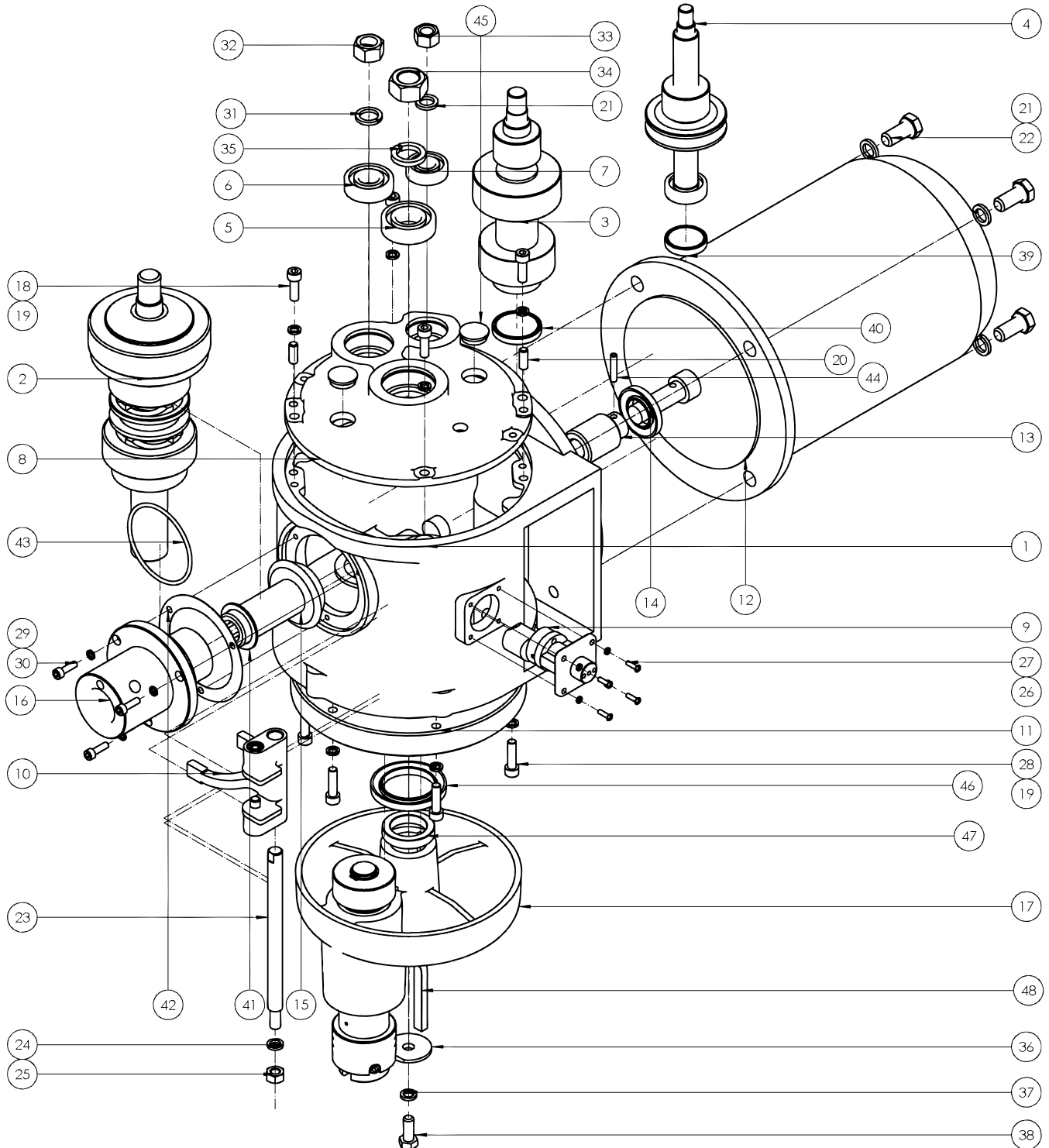




# Parts Breakdown

Model MX-CN-0040 44389

Head



# Parts Breakdown

## Model MX-CN-0040 44389

## General Assembly

Item No.	Description	Position	Item No.	Description	Position	Item No.	Description	Position
67885	Body for 44389	1	67894	Crank Lever for 44389	31	67775	Emergency Stop Button for 44389	59
67886	Bowl for 44389	3	67895	Crash Pad for 44389	32	67910	Thermal Relay for 44389	60
67887	Support for 44389	4	67896	Davit for 44389	33	67815	Water Joint for 44389	61
67783	Stainless Steel Flat Washer $\Phi 8$ for 44389	6	67897	Connecting Rod for 44389	34	67821	Plastic Block for 44389	62
67888	Bolt M8x40 for 44389	7	24938	Spacer for 44389	35	67816	Travel Cover for 44389	63
64977	Thumb Screw for 44389	8	67898	Hook for 44389	36	24947	Safety Guard-Bowl Switch for 44389	64
67800	Connecting Rod for 44389	9	67899	Spring for 44389	37	67810	Flat Washer $\Phi 3$ for 44389	65
67799	Speed Handle for 44389	10	25003	Spacer for 44389	38	67911	Bolt M3x20 for 44389	66
25796	Handle Sleeve M8x58 for 44389	11	67900	Screw Nut M14 for 44389	39	65378	Flat Pad 4 for 44389	67
67777	Elastic Cylindrical Pin $\Phi 4 \times 20$ for 44389	12	65326	Hex Bolt M10x30 for 44389	40	67912	Bolt M4x12 for 44389	68
67801	Bolt M5x50 for 44389	13	24883	Nut for 44389	41	67913	Bolt M6x35 for 44389	69
64985	Hub Ring for 44389	14	67901	Cover Plate-Down for 44389	42	67914	Nut M6 for 44389	70
67889	Safety Grid for 44389	15	67902	Guide Rail Plate for 44389	43	67784	Bolt M6x10 for 44389	71
67796	Safety Grid Positioning Block for 44389	16	25096	Spring Washer for 44389	44	67915	Back Cover for 44389	72
67798	Safety Grid Positioning Block for 44389	17	67828	Bolt M8x20 for 44389	45	67916	Handle Sleeve M16x80 for 44389	73
67890	Side Guard Left / Right for 44389	18, 77	65374	Flat Pad 8 for 44389	46	65370	Stainless Steel Flat Pad 6 for 44389	74
67877	Stroke Hit Head for 44389	19	67903	Bolt M10x25 for 44389	47	67917	Screw M6x35 for 44389	75
65366	Stainless Steel Flat Pad 8 for 44389	20	24882	Ring for 44389	48	67823	Bolt M4x6 for 44389	76
67804	Bolt M5x30 for 44389	22	67904	Elastic Cylindrical Pin $\Phi 5 \times 30$ for 44389	49	67918	Handle-Shifter for 44389	78
67805	Stainless Steel Flat Washer $\Phi 5$ for 44389	23	67807	Bolt M3x6 for 44389	50	67803	Timer Knob for 44389	79
65357	Stainless Steel Flat Pad 5 for 44389	24	67905	Drafty Plate for 44389	51	67822	Bolt M5x10 for 44389	80
67891	Cover Plate Assembly for 44389	25	67906	Elastic Cylindrical Pin $\Phi 6 \times 40$ for 44389	52	67778	Plug for 44389	81
67892	Bowl Locating Pin for 44389	26	67907	Elastic Cylindrical Pin $\Phi 4 \times 40$ for 44389	53	67919	Electrical Baffle for 44389	82
67786	Stainless Steel Screw Nut M8 for 44389	27	67908	Cotter 3x25 for 44389	54	67920	Screw M5x8 for 44389	85
67795	Press Board 1 for 44389	28, 83	67909	Top Cover for 44389	55	67921	Sticker for 44389	86
67893	Clamp Screw for 44389	29	65253	Timer for 44389	56	67922	Beater for 44389	87
67787	Spring for 44389	30	24922	Green Button Round for 44389	57	67923	Wire Whip for 44389	88

# Parts Breakdown

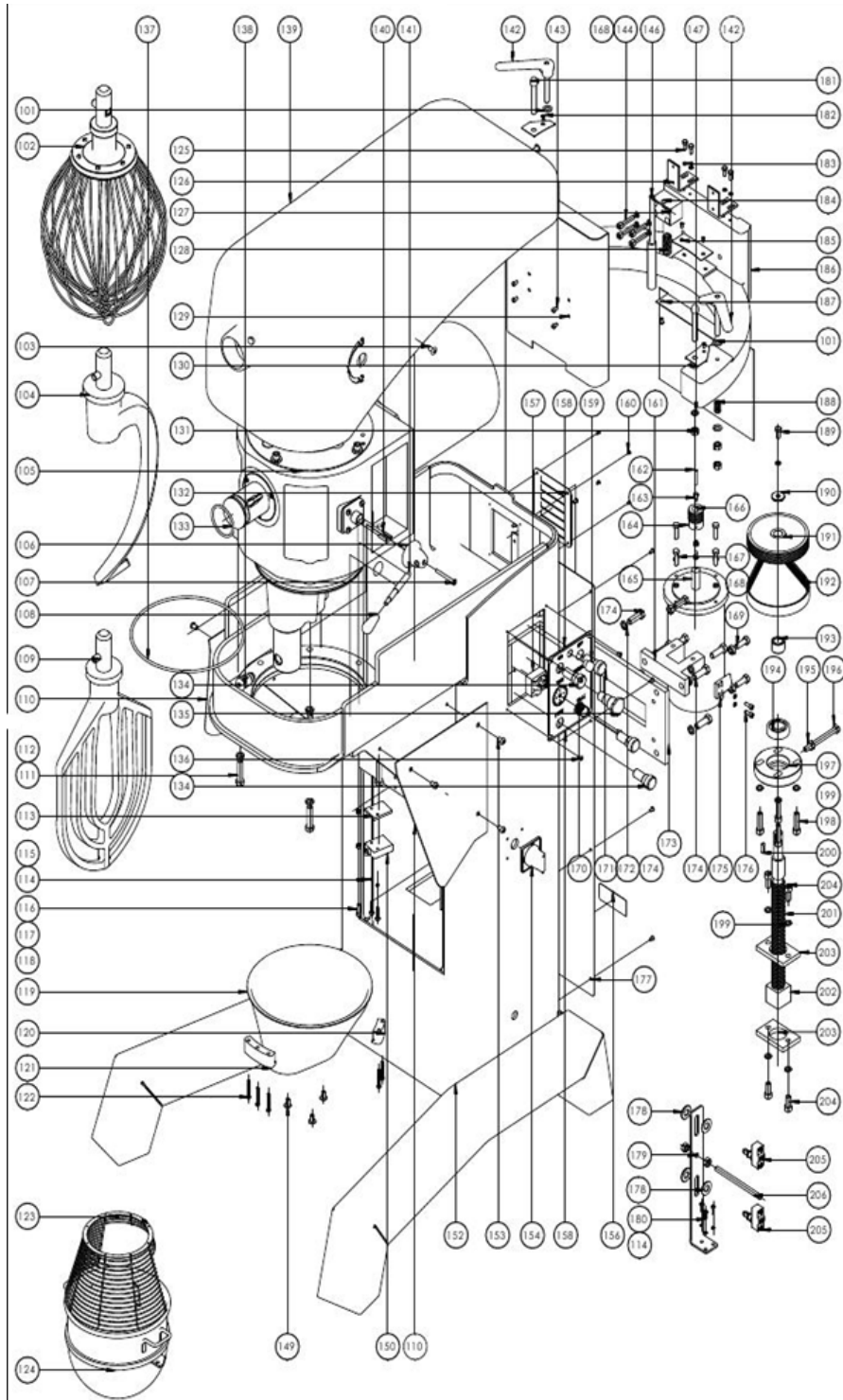
**Model MX-CN-0040 44389**

**Head**

Item No.	Description	Position	Item No.	Description	Position	Item No.	Description	Position
67924	Gearbox for 44389	1	24905	Bearing 6205 for 44389	5	24997	Bearing for 44389	17
67925	Key A=10mm x 45mm for 44389	2	25070	Bearing 6204 for 44389	6	24905	Bearing 6205 for 44389	17
67926	Spacer-Lower-2 for 44389	2	25006	Bearing for 44389	7	67966	Shaft Holder for 44389	17
67927	Bearing 6207-Z for 44389	2	67950	Cover Gear Housing for 44389	8	67967	Screw M8x25 for 44389	18
67928	Spacer-Lower-1 for 44389	2	67872	O-Ring Seal 9x1.8G for 44389	9	25096	Spring Washer for 44389	19
67929	Clutch Gear for 44389	2	67871	O-Ring Seal 33.5x1.8G for 44389	9	67968	PinΦ8x20 for 44389	20
67930	Sleeve Clutch for 44389	2	25719	Retainer-Spring 4x30 for 44389	9	24893	Spring Washers for 44389	21
67931	Key A=10mm x 35mm for 44389	2	25794	Steel Ball for 44389	9	67969	Bolt M14x30 for 44389	22
67932	Bushing for 44389	2	25718	Spring for 44389	9	67970	Shift Rail for 44389	23
67933	Clutch Gear for 44389	2	67951	Handle-Shifter for 44389	9	67971	Spring Washer Φ16 for 44389	24
67934	Gear for 44389	2	67952	Cam-Gear Shifter for 44389	9	67972	Spring Washer Φ4 for 44389	26
67935	Super Machine Parts for 44389	2	67867	Handle Seat for 44389	9	67824	Bolt M4x14 for 44389	27
67936	Gear for 44389	2	24957	Screw for 44389	10	67860	Hexagon Screw M8x30 for 44389	28
67937	Roller 12x27 for 44389	2	67953	Pin Shaft for 44389	10	39316	Locking Washer for Screws for Back Housing for 44389	29
67938	Main Shaft for 44389	2	67954	Spring for 44389	10	67846	Bolt M6x20 for 44389	30
67939	Key C=8mm x 28mm for 44389	3	67955	Shifting Yoke for 44389	10	25004	Nut for 44389	32
67940	Key A=8mm x 28mm for 44389	3	67956	Internal Gear for 44389	11	25714	Nut 14x1.5 for 44389	33
25070	Bearing 6204 for 44389	3	67957	Motor for 44389	12	67973	Nut M22x1.5 for 44389	34
25034	Circlips for Shaft for 44389	3	67958	Worm Wheel for 44389	13	67974	Spring Washer Φ22 for 44389	35
67941	Bushing for 44389	3	24977	Oil Seal for 44389	14	67975	Running Clamp for 44389	36
67942	Bushing for 44389	3	67959	Gear for 44389	15	67976	Bolt M10x25 for 44389	38
67943	Gear for 44389	3	67960	Attachment Hub for 44389	16	25028	Plug 1 for 44389	39
67944	Gear for 44389	3	39316	Locking Washer for Screws for Back Housing for 44389	17	67977	Plug Cover for 44389	40
67945	Mid-Gear Wheel for 44389	3	67874	Hexagon Screws M6x8 for 44389	17	24871	Ring for 44389	41
25006	Bearing for 44389	4	67961	Fixed Sleeve for 44389	17	67978	O-Ring for 44389	43
25009	Circlips for Shaft for 44389	4	67946	Shaft Circlips 24 for 44389	17	25765	Shifter Yoke for 44389	44
67946	Shaft Circlips 24 for 44389	4	67962	Planetary Gear for 44389	17	24985	Plug Cover for 44389	45
67947	Key A=6mm x 22mm for 44389	4	67963	Key A=6mm x 30mm for 44389	17	67979	Oil Seal 50x72x8 for 44389	46
67948	Worm Gear for 44389	4	67964	Oil Seal 35x62x7 for 44389	17	67980	Spacer-Lower-3 for 44389	47
67949	Worm-Wheel Shaft for 44389	4	67965	Run Bearing for 44389	17	67981	Key C=10mm x 75mm for 44389	48

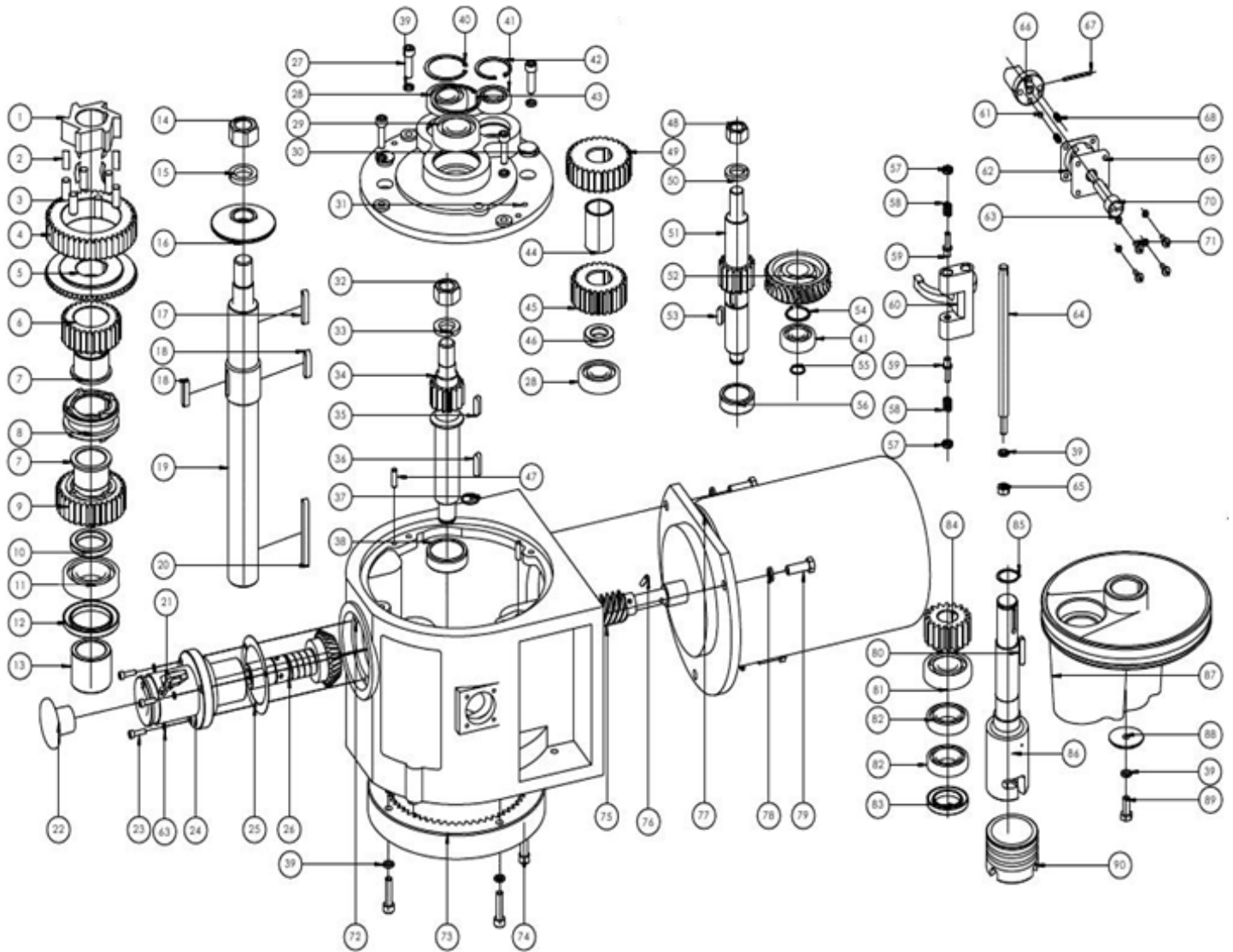
# Parts Breakdown

Model MX-CN-0060 44390



# Parts Breakdown

Model MX-CN-0060 44390



# Parts Breakdown

## Model MX-CN-0060 44390

Item No.	Description	Position	Item No.	Description	Position	Item No.	Description	Position
68050	Gear for 44390	1	68038	Bearing 6304 for 44390	41	68070	Bearing 6306 for 44390	81
68051	Coil Spring for 44390	2	68079	Circlips 52 for 44390	42	68106	Bearing 6007 for 44390	82
68052	Roller for 44390	3	68080	Circlips 72 for 44390	43	24999	Oil Seal for 44390	83
68053	Super Machine Parts for 44390	4	68081	Bushing for 44390	44	68107	Planetary Gear for 44390	84
68054	Level Drive Gear for 44390	5	68082	Gear for 44390	45	68108	Circlips for Shaft 30 for 44390	85
68055	Clutch Gear for 44390	6	68083	Gasket for 44390	46	68109	Working Shaft for 44390	86
68056	Bushing for 44390	7	68084	Pin 8x26 for 44390	47	68110	Operating Shaft for 44390	87
68057	Sleeve Clutch for 44390	8	65348	Nut M20 for 44390	48	68111	Running Clamp for 44390	88
68058	Clutch Gear for 44390	9	68085	Gear for 44390	49	68112	Bolt M10x25 for 44390	89
68059	Shaft Bushing for 44390	10	68086	Spring Washer 20 for 44390	50	68113	Agitator Joint Shaft for 44390	90
28665	Bearing 6209-Z for 44390	11	68087	Gear Wheel for 44390	51	67982	Flat Washer 10 for 44390	101
68060	Oil Seal for 44390	12	68088	Worm Gear for 44390	52	67983	Wire Whipper for 44390	102
68061	Bushing for 44390	13	68089	Flat Key 8x25 for 44390	53	67984	Slotted Screws M8x15 for 44390	103
68062	Nut M27x2 for 44390	14	68090	Circlips for Shaft 34 for 44390	54	67985	Spiral Hook for 44390	104
68063	Spring Washer 27 for 44390	15	25034	Circlips for Shaft for 44390	55	67986	Shaft for 44390	106
68059	Shaft Bushing for 44390	16	68091	Plug 2 for 44390	56	67987	Phillips Screw M6x60 for 44390	107
65338	Flat Key A10x50 for 44390	17	24957	Screw for 44390	57	25796	Handle Sleeve M8x58 for 44390	108
68064	Flat Key 10x40 for 44390	18	67954	Spring for 44390	58	67988	Flat Beater for 44390	109
68065	Main Shaft for 44390	19	67953	Pin Shaft for 44390	59	67989	Side Guard for 44390	110
68066	Key C10x60 for 44390	20	68092	Shifting Yoke for 44390	60	65319	Stainless Steel Hex Bolt M12x50 for 44390	111
64977	Thumb Screw for 44390	21	68093	Steel Ball 8 for 44390	61	65321	Stainless Steel Spring Washer 12 for 44390	112
24967	Plug for 44390	22	68094	Gasket for 44390	62	67990	Subplate for 44390	113
67846	Bolt M6x20 for 44390	23	39316	Locking Washer for Screws for Back Housing for 44390	63	67865	Spring Washer 5 for 44390	114
68067	Attachment Hub for 44390	24	68095	Declutch Shift Shaft for 44390	64	67991	Hexagon Screw M5x25 for 44390	115
67849	Paper Washer for 44390	25	24883	Nut for 44390	65	67846	Bolt M6x20 for 44390	116
68068	Bevel Gear Unit for 44390	26	68096	Cam-Gear Shifter for 44390	66	39316	Locking Washer for Screws for Back Housing for 44390	117
68045	Hexagon Screw M10x25 for 44390	27	68097	Elastic Cylindrical Pin 4x45 for 44390	67	67914	Nut M6 for 44390	118
68069	Bearing 6305 for 44390	28	68098	Spring for 44390	68	67992	Gasket for 44390	119
68070	Bearing 6306 for 44390	29	68099	Plate-Shifter Index for 44390	69	67796	Safety Grid Positioning Block for 44390	120
24985	Plug Cover for 44390	30	68100	Handle-Shifter for 44390	70	67798	Safety Grid Positioning Block for 44390	121
68071	Cover Gear Housing for 44390	31	65394	Phillips Screw M6x20 for 44390	71	67993	Hexagon Screws M6x40 for 44390	122
68072	Nut M24x2 for 44390	32	68101	Gear Box for 44390	72	67994	Safety Guard for 44390	123
68073	Spring Washer 24 for 44390	33	68102	Internal Gear for 44390	73	67995	Bowl for 44390	124
68074	Mid-Gear Wheel for 44390	34	68041	Hexagon Screw M10x40 for 44390	74	67996	Bolt M6x16 for 44390	125
67940	Key A=8mm x 28mm for 44390	35	68103	Worm Wheel for 44390	75	67997	Angle Iron for 44390	126
68075	Flat Key 8x32 for 44390	36	25765	Shifter Yoke for 44390	76	25720	Retainer-Spring 4x25 for 44390	127
68076	Circlips for Shaft 25 for 44390	37	68104	Motor for 44390	77	25046	Spring for 44390	128
68077	Plug 1 for 44390	38	25030	Spring Washers for 44390	78	67998	Top Cover Assembly for 44390	129
24882	Ring for 44390	39	65303	Hex Bolt M12x55 for 44390	79	67999	Bracket Block 1 for 44390	130
68078	Circlips 62 for 44390	40	68105	Flat Key 8x40 for 44390	80	24883	Nut for 44390	131

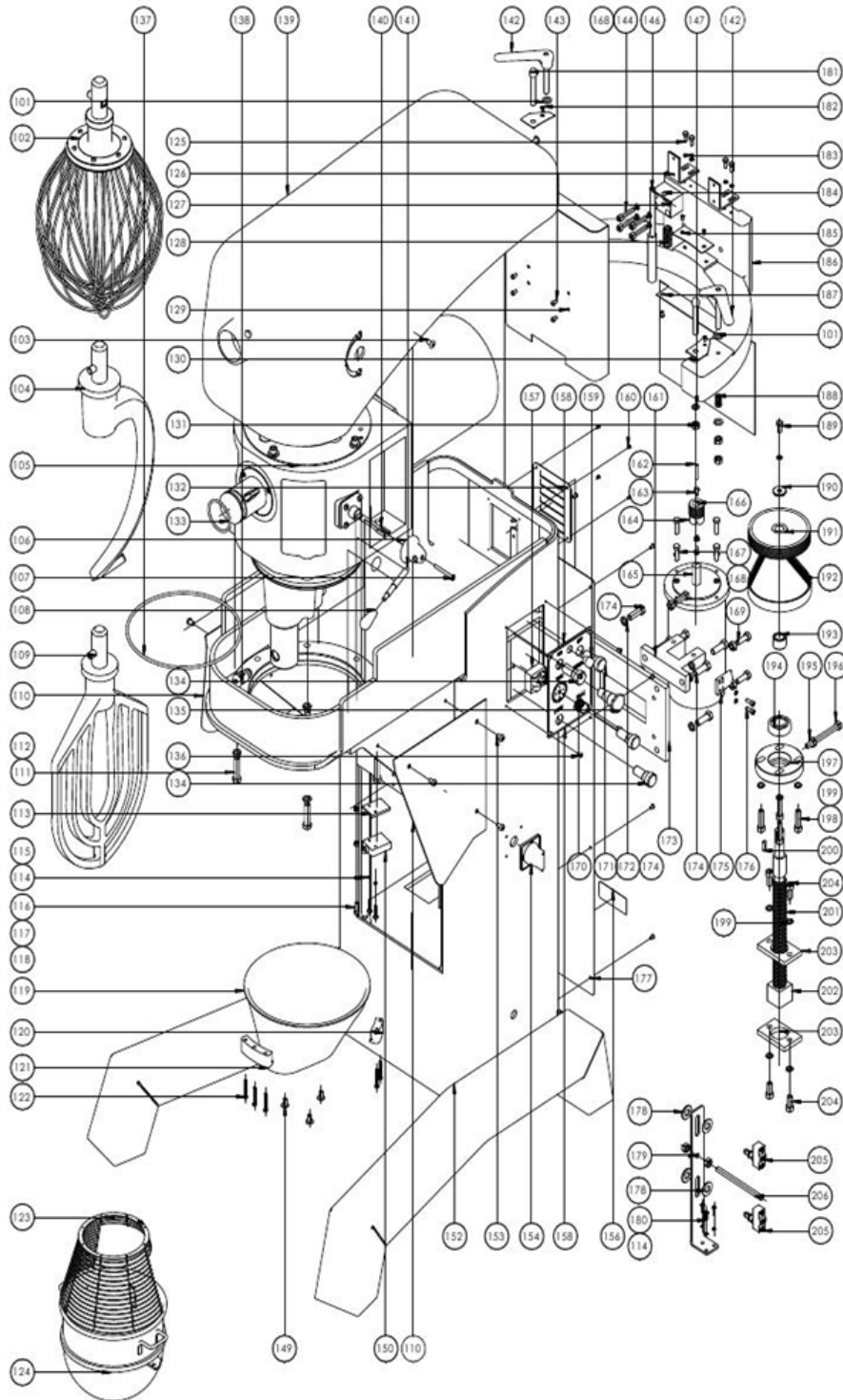
# Parts Breakdown

## Model MX-CN-0060 44390

Item No.	Description	Position	Item No.	Description	Position	Item No.	Description	Position
68000	Ventilation Plate for 44390	132	68017	Handle-Shifter Seat for 44390	161	68031	Support for 44390	186
68001	O-Ring 55x5G for 44390	133	68018	Key C6x35 for 44390	162	68032	Bottom Cover for 44390	187
24922	Green Button Round for 44390	134	68019	Hexagon Screw M6x15 for 44390	163	68033	Spring for 44390	188
67775	Emergency Stop Button for 44390	135	68020	Small Pulley for 44390	164	67828	Bolt M8x20 for 44390	189
24924	Red Button Round without Timer for 44390	136	68021	Lifting Motor for 44390	165	68034	Wheel Plate for 44390	190
68002	O-Ring 250x5.3G for 44390	137	67779	Screw Nut M6 for 44390	166	68035	Wheel for 44390	191
68003	Top Cover for 44390	139	25096	Spring Washer for 44390	168	68036	Belt 10PJ 570 for 44390	192
68004	Pin 5x25 for 44390	140	68022	Bolt M8x30 for 44390	167	68037	Shaft Sleeve for 44390	193
68005	Gear Shift Lever for 44390	141	65326	Hex Bolt M10x30 for 44390	169	68038	Bearing 6304 for 44390	194
68006	Press Board for 44390	142	67803	Timer Knob for 44390	170	24883	Nut for 44390	195
67784	Bolt M6x10 for 44390	143	24924	Red Button Round without Timer for 44390	171	68039	Bolt M10x100 for 44390	196
68007	Hexagon Screw M8x40 for 44390	144	25030	Spring Washers for 44390	172	68040	Shaft Block for 44390	197
68008	Shaft for 44390	146	68023	Lifting Clamp for 44390	173	68041	Hexagon Screw M10x40 for 44390	198
68009	Spring Washer 10 for 44390	147	65303	Hex Bolt M12x55 for 44390	174	24882	Ring for 44390	199
67984	Slotted Screws M8x15 for 44390	149	68024	Block for 44390	175	67947	Key A=6mm x 22mm for 44390	200
68010	D4C Switch for 44390	150	68019	Hexagon Screw M6x15 for 44390	176	68042	Screw Rod for 44390	201
68011	Body Assembly for 44390	152	68025	Back Cover Plate for 44390	177	68043	Feed Screw Nut for 44390	202
68012	Hexagon Screws M8x12 for 44390	153	24938	Spacer for 44390	178	68044	Nut Clamp for 44390	203
68013	Stop Switch-1 for 44390	154	68026	Tour Guide for 44390	179	68045	Hexagon Screw M10x25 for 44390	204
68014	Stop Switch-2 for 44390	154	67851	Bolt M5x16 for 44390	180	68046	Limit Switch for 44390	205
67833	Parameters Brand for 44390	156	68027	Clamp Screw for 44390	181	68047	Strut for 44390	206
25778	Timer for 44390	157	68028	Phillips Screw M4x10 for 44390	182	68048	Electrical Baffle for 44390	207
68015	Sticker for 44390	158	39316	Locking Washer for Screws for Back Housing for 44390	183	68049	Heavy Duty Connector for 44390	208
68016	Sticker for 44390	158	68029	Bowl Roller Seat for 44390	184	67802	Bolt ST 4.8x12 for 44390	209
67823	Bolt M4x6 for 44390	160	68030	Bracket Block 2 for 44390	185			

# Parts Breakdown

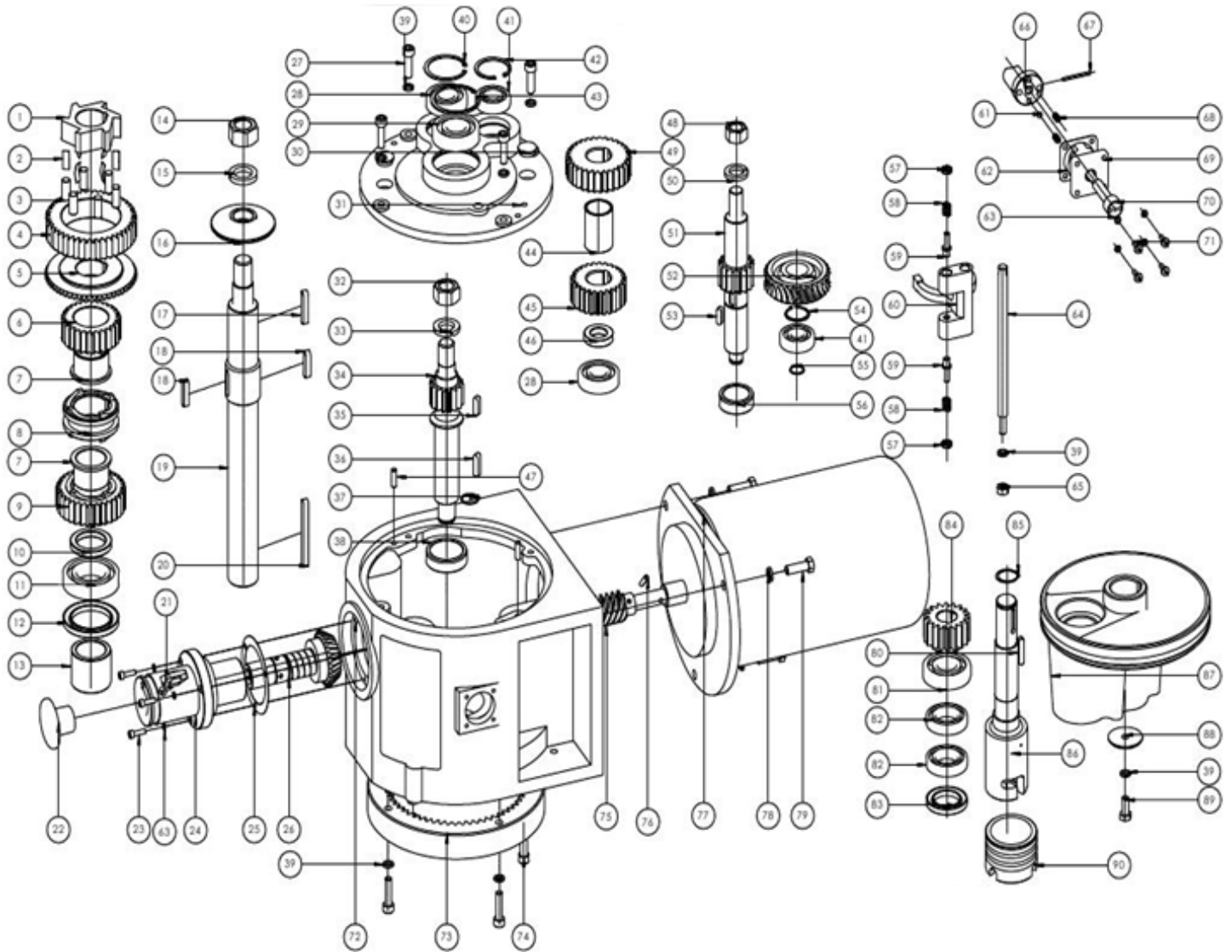
Model MX-CN-0080 44391





# Parts Breakdown

Model MX-CN-0080 44391



# Parts Breakdown

## Model MX-CN-0080 44391

Item No.	Description	Position	Item No.	Description	Position	Item No.	Description	Position
68050	Gear for 44391	1	68038	Bearing 6304 for 44391	41	68070	Bearing 6306 for 44391	81
68051	Coil Spring for 44391	2	68079	Circlips 52 for 44391	42	68106	Bearing 6007 for 44391	82
68052	Roller for 44391	3	68080	Circlips 72 for 44391	43	24999	Oil Seal for 44391	83
68053	Super Machine Parts for 44391	4	68081	Bushing for 44391	44	68107	Planetary Gear for 44391	84
68054	Level Drive Gear for 44391	5	68082	Gear for 44391	45	68108	Circlips for Shaft 30 for 44391	85
68055	Clutch Gear for 44391	6	68083	Gasket for 44391	46	68109	Working Shaft for 44391	86
68056	Bushing for 44391	7	68084	Pin 8x26 for 44391	47	68110	Operating Shaft for 44391	87
68057	Sleeve Clutch for 44391	8	65348	Nut M20 for 44391	48	68111	Running Clamp for 44391	88
68058	Clutch Gear for 44391	9	68085	Gear for 44391	49	68112	Bolt M10x25 for 44391	89
68059	Shaft Bushing for 44391	10	68086	Spring Washer 20 for 44391	50	68113	Agitator Joint Shaft for 44391	90
28665	Bearing 6209-Z for 44391	11	68087	Gear Wheel for 44391	51	67982	Flat Washer 10 for 44391	101
68060	Oil Seal for 44391	12	68088	Worm Gear for 44391	52	68114	Wire Whipper for 44391	102
68061	Bushing for 44391	13	68089	Flat Key 8x25 for 44391	53	67984	Slotted Screws M8x15 for 44391	103
68062	Nut M27x2 for 44391	14	68090	Circlips for Shaft 34 for 44391	54	68115	Spiral Hook for 44391	104
68063	Spring Washer 27 for 44391	15	25034	Circlips for Shaft for 44391	55	67986	Shaft for 44391	106
68059	Shaft Bushing for 44391	16	68091	Plug 2 for 44391	56	67987	Phillips Screw M6x60 for 44391	107
65338	Flat Key A10x50 for 44391	17	24957	Screw for 44391	57	25796	Handle Sleeve M8x58 for 44391	108
68064	Flat Key 10x40 for 44391	18	67954	Spring for 44391	58	68116	Flat Beater for 44391	109
68065	Main Shaft for 44391	19	67953	Pin Shaft for 44391	59	67989	Side Guard for 44391	110
68066	Key C10x60 for 44391	20	68092	Shifting Yoke for 44391	60	65319	Stainless Steel Hex Bolt M12x50 for 44391	111
64977	Thumb Screw for 44391	21	68093	Steel Ball 8 for 44391	61	65321	Stainless Steel Spring Washer 12 for 44391	112
24967	Plug for 44391	22	68094	Gasket for 44391	62	67990	Subplate for 44391	113
67846	Bolt M6x20 for 44391	23	39316	Locking Washer for Screws for Back Housing for 44391	63	67865	Spring Washer 5 for 44391	114
68067	Attachment Hub for 44391	24	68095	Declutch Shift Shaft for 44391	64	67991	Hexagon Screw M5x25 for 44391	115
67849	Paper Washer for 44391	25	24883	Nut for 44391	65	67846	Bolt M6x20 for 44391	116
68068	Bevel Gear Unit for 44391	26	68096	Cam-Gear Shifter for 44391	66	39316	Locking Washer for Screws for Back Housing for 44391	117
68045	Hexagon Screw M10x35 for 44391	27	68097	Elastic Cylindrical Pin 4x45 for 44391	67	67914	Nut M6 for 44391	118
68069	Bearing 6305 for 44391	28	68098	Spring for 44391	68	67992	Gasket for 44391	119
68070	Bearing 6306 for 44391	29	68099	Plate-Shifter Index for 44391	69	67796	Safety Grid Positioning Block for 44391	120
24985	Plug Cover for 44391	30	68100	Handle-Shifter for 44391	70	67798	Safety Grid Positioning Block for 44391	121
68071	Cover Gear Housing for 44391	31	65394	Phillips Screw M6x20 for 44391	71	67993	Hexagon Screws M6x40 for 44391	122
68072	Nut M24x2 for 44391	32	68101	Gear Box for 44391	72	67994	Safety Guard for 44391	123
68073	Spring Washer 24 for 44391	33	68102	Internal Gear for 44391	73	68117	Bowl for 44391	124
68074	Mid-Gear Wheel for 44391	34	68041	Hexagon Screw M10x40 for 44391	74	67996	Bolt M6x16 for 44391	125
67940	Key A=8mm x 28mm for 44391	35	68103	Worm Wheel for 44391	75	67997	Angle Iron for 44391	126
68075	Flat Key 8x32 for 44391	36	25765	Shifter Yoke for 44391	76	25720	Retainer-Spring 4x25 for 44391	127
68076	Circlips for Shaft 25 for 44391	37	68104	Motor for 44391	77	25046	Spring for 44391	128
68077	Plug 1 for 44391	38	25030	Spring Washers for 44391	78	67998	Top Cover Assembly for 44391	129
24882	Ring for 44391	39	65303	Hex Bolt M12x55 for 44391	79	67999	Bracket Block 1 for 44391	130
68078	Circlips 62 for 44391	40	68105	Flat Key 8x40 for 44391	80	24883	Nut for 44391	131

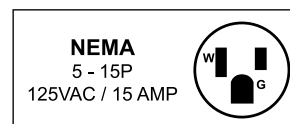
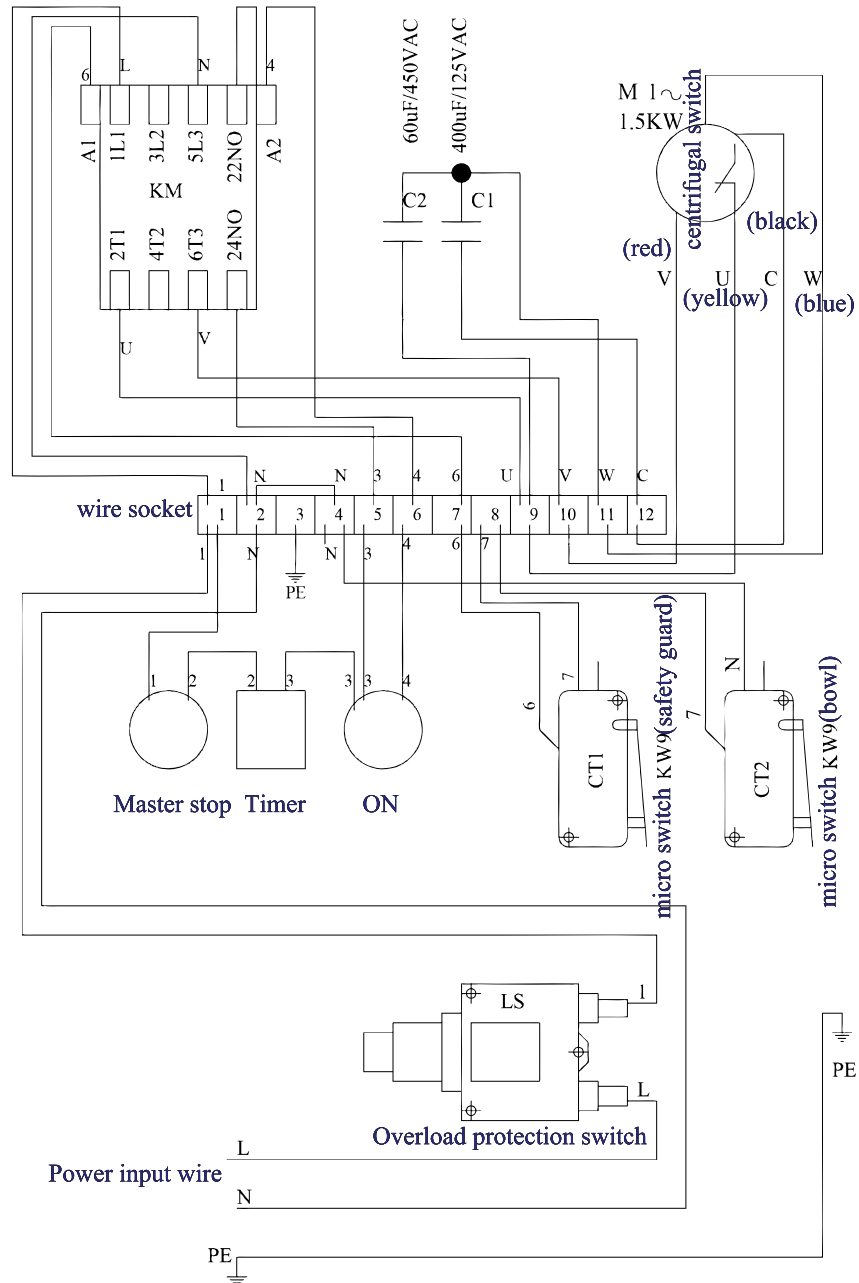
# Parts Breakdown

## Model MX-CN-0080 44391

Item No.	Description	Position	Item No.	Description	Position	Item No.	Description	Position
68000	Ventilation Plate for 44391	132	67823	Bolt M4x6 for 44391	160	68030	Bracket Block 2 for 44391	185
68001	O-Ring 55x5G for 44391	133	68017	Handle-Shifter Seat for 44391	161	68031	Support for 44391	186
24922	Green Button Round for 44391	134	68018	Key C6x35 for 44391	162	68032	Bottom Cover for 44391	187
67775	Emergency Stop Button for 44391	135	68019	Hexagon Screw M6x15 for 44391	163	68033	Spring for 44391	188
24924	Red Button Round without Timer for 44391	136	68020	Small Pulley for 44391	164	67828	Bolt M8x20 for 44391	189
68002	O-Ring 250x5.3G for 44391	137	68021	Lifting Motor for 44391	165	68034	Wheel Plate for 44391	190
68003	Top Cover for 44391	139	67779	Screw Nut M6 for 44391	166	68035	Wheel for 44391	191
68004	Pin 5x25 for 44391	140	25096	Spring Washer for 44391	168	68036	Belt 10PJ 570 for 44391	192
68005	Gear Shift Lever for 44391	141	68022	Bolt M8x30 for 44391	167	68037	Shaft Sleeve for 44391	193
68006	Press Board for 44391	142	65326	Hex Bolt M10x30 for 44391	169	68038	Bearing 6304 for 44391	194
67784	Bolt M6x10 for 44391	143	67803	Timer Knob for 44391	170	24883	Nut for 44391	195
68007	Hexagon Screw M8x40 for 44391	144	24924	Red Button Round without Timer for 44391	171	68039	Bolt M10x100 for 44391	196
68008	Shaft for 44391	146	25030	Spring Washers for 44391	172	68040	Shaft Block for 44391	197
68009	Spring Washer 10 for 44391	147	68023	Lifting Clamp for 44391	173	68041	Hexagon Screw M10x40 for 44391	198
68118	Slotted Screws M8x15 for 44391	149	65303	Hex Bolt M12x55 for 44391	174	24882	Ring for 44391	199
68010	D4C Switch for 44391	150	68024	Block for 44391	175	67947	Key A=6mm x 22mm for 44391	200
67989	Side Guard for 44391	151	68019	Hexagon Screw M6x16 for 44391	176	68042	Screw Rod for 44391	201
68011	Body Assembly for 44391	152	68025	Back Cover Plate for 44391	177	68043	Feed Screw Nut for 44391	202
68012	Hexagon Screws M8x12 for 44391	153	24938	Spacer for 44391	178	68044	Nut Clamp for 44391	203
68013	Stop Switch-1 for 44391	154	68026	Tour Guide for 44391	179	68045	Hexagon Screw M10x25 for 44391	204
68014	Stop Switch-2 for 44391	154	67851	Bolt M5x16 for 44391	180	68046	Limit Switch for 44391	205
67833	Parameter Plate for 44391	156	68027	Clamp Screw for 44391	181	68047	Strut for 44391	206
25778	Timer for 44391	157	68028	Phillips Screw M4x10 for 44391	182	68048	Electrical Baffle for 44391	207
68015	Sticker for 44391	158	39316	Locking Washer for Screws for Back Housing for 44391	183	68049	Heavy Duty Connector for 44391	208
68016	Sticker for 44391	158	68029	Bowl Roller Seat for 44391	184	67802	Bolt ST 4.8x12 for 44391	209

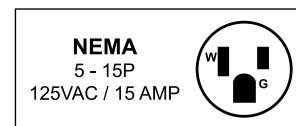
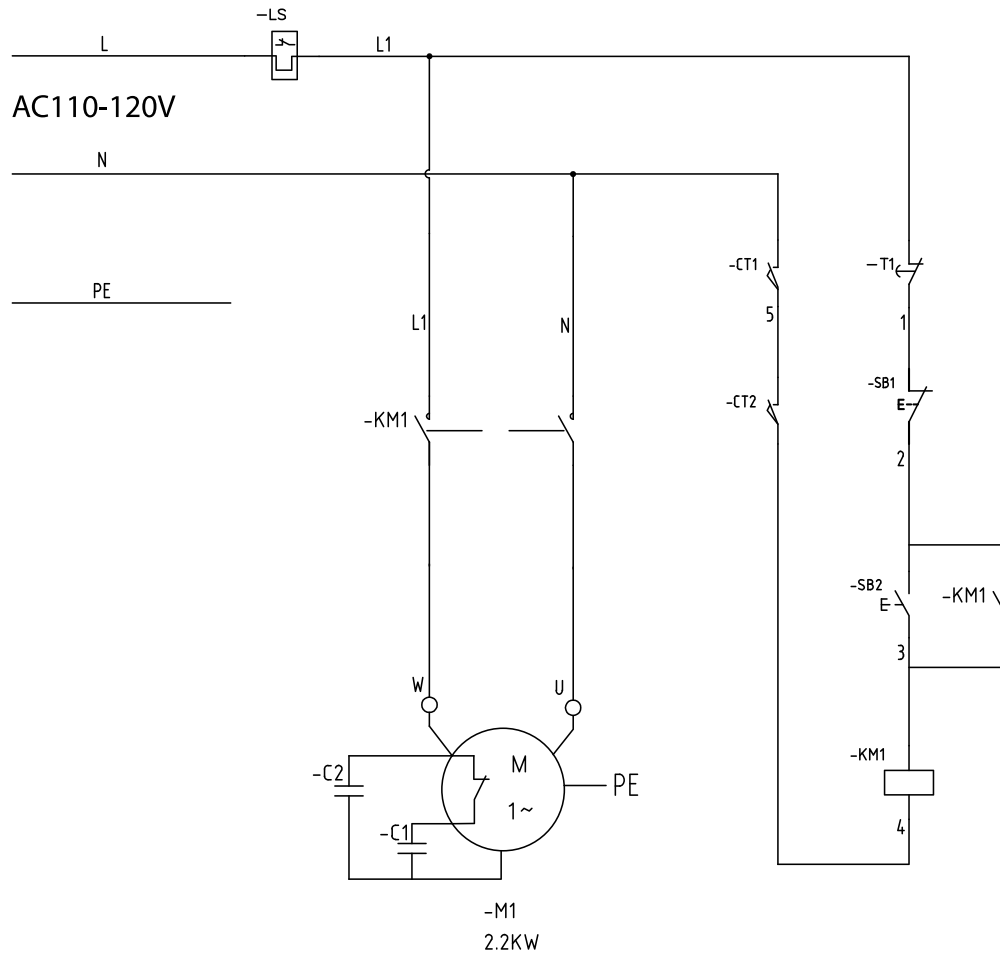
# Electrical Schematics

Model MX-CN-0020 43560



# Electrical Schematics

**Model MX-CN-0030** 44388



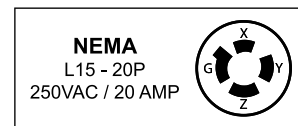
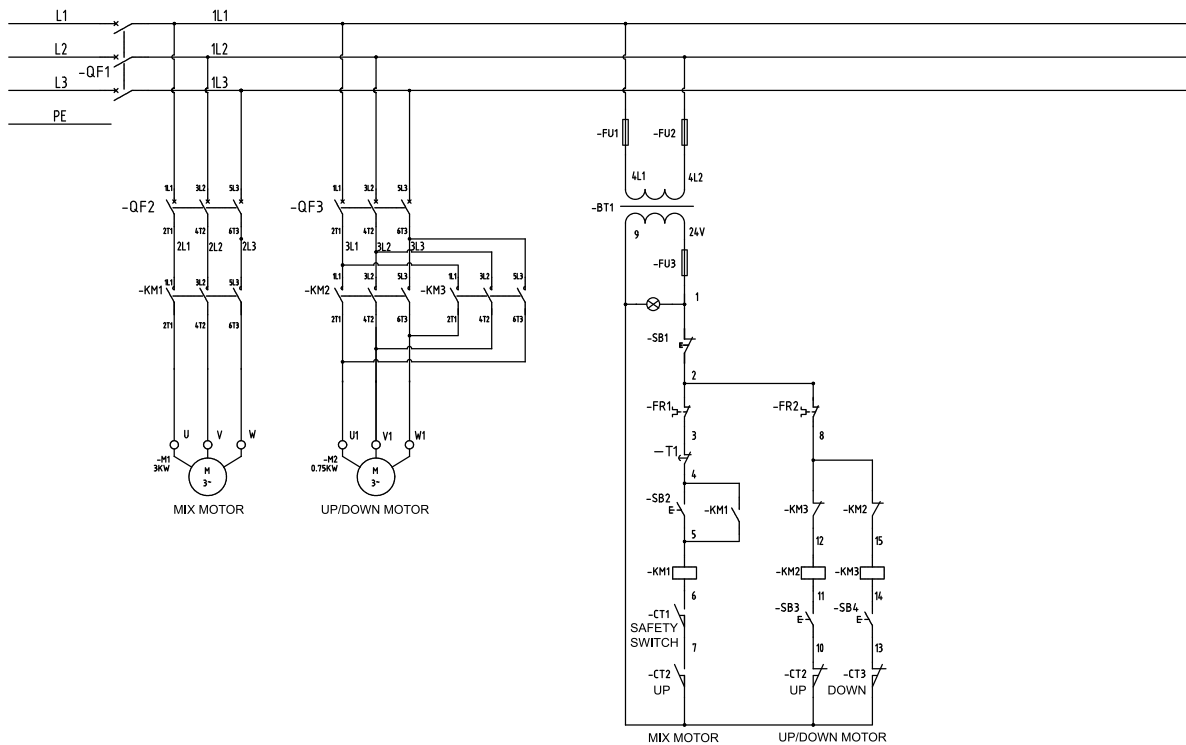
CODE	DESCRIPTION	CODE	DESCRIPTION
C1	START CAPACITOR	LS	OVERFLOW PROTECT SWITCH
C2	WORKING CAPACITOR	M1	MAIN MOTOR
CT1	MICROSWITCH	SB1	STOP BUTTON
CT2	MICROSWITCH	SB2	START BUTTON
KM1	AC CONTACTOR	T1	TIMER

# Electrical Schematics

**Model MX-CN-0040** 44389

**Model MX-CN-0060** 44390

**Model MX-CN-0080** 44391



CODE	DESCRIPTION	CODE	DESCRIPTION
BT1	Transformer	QF1	Breaker
CT1	Microswitch	QF2	Breaker
CT2-3	Microswitch	QF3	Breaker
FU1-2	Fuse	SB1	Stop Button
FU3	Fuse	SB2-4	Start Button
KM1	Contactor	T1	Timer
KM2-3	Contactor		



# Warranty Registration

Thank you for purchasing an Omcan product. To register your warranty for this product, complete the information below, tear off the card at the perforation and then send to the address specified below. You can also register online by visiting:

Merci d'avoir acheté un produit Omcan. Pour enregistrer votre garantie pour ce produit, complétez les informations ci-dessous, détachez la carte au niveau de la perforation, puis l'envoyer à l'adresse spécifiée ci-dessous. Vous pouvez également vous inscrire en ligne en visitant:

Gracias por comprar un producto Omcan usted. Para registrar su garantía para este producto, complete la información a continuación, cortar la tarjeta en la perforación y luego enviarlo a la dirección indicada a continuación. También puede registrarse en línea en:

<https://omcan.com/warranty-registration/>

For mailing in Canada

Pour postale au Canada

Por correo en Canadá

**OMCAN**

PRODUCT WARRANTY REGISTRATION

3115 Pepper Mill Court,

Mississauga, Ontario

Canada, L5L 4X5

For mailing in the US

Pour diffusion aux États-Unis

Por correo en los EE.UU.

**OMCAN**

PRODUCT WARRANTY REGISTRATION

4450 Witmer Industrial Estates, Unit 4,

Niagara Falls, New York

USA, 14305

*or email to: [service@omcan.com](mailto:service@omcan.com)*



Purchaser's Information

Name: \_\_\_\_\_

Address: \_\_\_\_\_

City: \_\_\_\_\_ Province or State: \_\_\_\_\_ Postal or Zip: \_\_\_\_\_

Country: \_\_\_\_\_

Dealer from which Purchased: \_\_\_\_\_

Dealer City: \_\_\_\_\_ Dealer Province or State: \_\_\_\_\_

Invoice: \_\_\_\_\_

Model Name: \_\_\_\_\_ Model Number: \_\_\_\_\_

Machine Description: \_\_\_\_\_

Date of Purchase (MM/DD/YYYY): \_\_\_\_\_

Would you like to extend the warranty?  Yes  No

Company Name: \_\_\_\_\_

Telephone: \_\_\_\_\_

Email Address: \_\_\_\_\_

Type of Company:

Restaurant  Bakery  Deli

Butcher  Supermarket  Caterer

Institution (specify): \_\_\_\_\_

Other (specify): \_\_\_\_\_

Serial Number: \_\_\_\_\_

Date of Installation (MM/DD/YYYY): \_\_\_\_\_

**Thank you for choosing Omcan | Merci d'avoir choisi Omcan | Gracias por elegir Omcan**



Since 1951 Omcan has grown to become a leading distributor of equipment and supplies to the North American food service industry. Our success over these many years can be attributed to our commitment to strengthen and develop new and existing relationships with our valued customers and manufacturers. Today with partners in North America, Europe, Asia and South America, we continually work to improve and grow the company. We strive to offer customers exceptional value through our qualified local sales and service representatives who provide convenient access to over 6,500 globally sourced products.

---

Depuis 1951 Omcan a grandi pour devenir un des “leaders” de la distribution des équipements et matériel pour l’industrie des services alimentaires en Amérique du Nord. Notre succès au cours de ces nombreuses années peut être attribué à notre engagement à renforcer et à développer de nouvelles et existantes relations avec nos clients et les fabricants de valeur. Aujourd’hui avec des partenaires en Amérique du Nord, Europe, Asie et Amérique du Sud, nous travaillons continuellement à améliorer et développer l’entreprise. Nous nous efforçons d’offrir à nos clients une valeur exceptionnelle grâce à nos ventes locales qualifiées et des représentants de service qui offrent un accès facile à plus de 6500 produits provenant du monde entier.

---

Desde 1951 Omcan ha crecido hasta convertirse en un líder en la distribución de equipos y suministros de alimentos en América del Norte industria de servicios. Nuestro éxito en estos años se puede atribuir a nuestro compromiso de fortalecer y desarrollar nuevas relaciones existentes con nuestros valiosos clientes y fabricantes. Hoy con socios de América del Norte, Europa, Asia y América del Sur, que trabajan continuamente para mejorar y crecer la empresa. Nos esforzamos por ofrecer a nuestros clientes valor excepcional a través de nuestro local de ventas y representantes de los servicios que proporcionan un fácil acceso a más de 6,500 productos con origen a nivel mundial.

